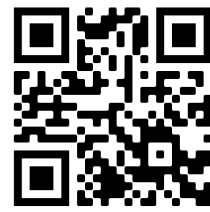




Gladstone
Healthy Harbour
Partnership



2019 GLADSTONE HARBOUR REPORT CARD

Independently monitoring
& reporting on the health of
Gladstone Harbour

Wild Cattle Creek

Healthy Harbour, Healthy Future

Social Results



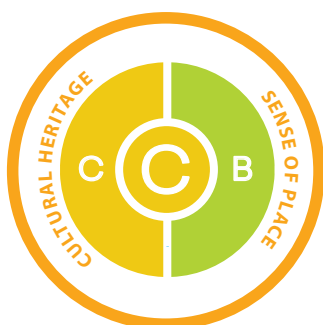
unchanged
2018 to 2019

high
confidence

SOCIAL	SCORE	GRADE
OVERALL SOCIAL	0.67	B
Harbour Usability	0.64	C
- Satisfaction with harbour recreational activities	0.71	B
- Perceptions of air & water quality	0.58	C
- Perceptions of harbour safety for human usage	0.63	C
Harbour Access	0.67	B
- Satisfaction with harbour access	0.73	B
- Satisfaction with boat ramps & public spaces	0.65	B
- Perceptions of harbour health	0.63	C
- Perceptions of barriers to access	0.66	B
Liveability / Wellbeing	0.70	B
- Liveability / wellbeing	0.70	B

The Social component grade for 2019 was good (B). Results were consistent with the previous year where community perceptions of harbour usability were satisfactory (C). Both harbour access and liveability/wellbeing remained good (B). This year an online version of the data collection survey was used to gather additional responses. The use of newer technology is necessary to streamline data collection and capture the most representative population in the Gladstone Harbour area. The results reflect how Gladstone Harbour contributes to the perceptions, wellbeing and lifestyle of the local community.

Cultural Results



unchanged
2018 to 2019

medium
confidence

CULTURAL	SCORE	GRADE
OVERALL CULTURAL	0.60	C
Sense of Place	0.66	B
- Place attachment	0.58	C
- Continuity	0.58	C
- Pride in the region	0.74	B
- Wellbeing	0.61	C
- Appreciation of the harbour	0.83	B
- Values	0.66	B
Cultural Heritage #	0.54	C
- Physical condition	0.56	C
- Management strategies	0.52	C

Represents the use of 2018 data

The overall grade for the Cultural component was satisfactory (C). The grade for sense of place remained good (B). This score has changed little in five years and suggests that the community's expectations of the harbour area are being met. The 2019 score for place attachment was slightly higher than previous year's suggesting an increased engagement with and appreciation of the harbour. Owing to the stability of the cultural heritage scores, no new monitoring was undertaken this year and the scores are derived from 2018 data.

Economic Results



unchanged
2018 to 2019

high
confidence

ECONOMIC	SCORE	GRADE
OVERALL ECONOMIC	0.73	B
Economic Performance	0.90	A
- Shipping activity	0.90	A
- Tourism	0.90	A
- Commercial fishing	0.36	D
Economic Stimulus	0.58	C
- Employment	0.44	D
- Socio-economic status	0.64	C
Economic Value (Recreation)	0.76	B
- Land-based recreation	0.77	B
- Recreational fishing	0.71	B
- Beach recreation	0.76	B
- Water-based recreation	0.76	B

The overall Economic grade for 2019 was good (B). Economic performance remains an A, owing to the continued strength of shipping and tourism. However commercial fishing received a poor score for the fourth consecutive year. Economic stimulus was satisfactory with employment continuing to score poorly, and socio-economic status remaining unchanged. The score for economic value (recreation) was slightly higher than last year with an improved score for recreational fishing. The scores for the remaining indicators were similar to last year.

Detailed FACT SHEETS are available at ghhp.org.au or on request to info@ghhp.org.au

Grading, Confidence & Trends

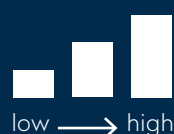
Grades for this report card were calculated using 33 indicators derived from 108 different measures of the environmental, social, economic and cultural health of Gladstone Harbour. The components and indicator groups were graded A, B, C, D or E, based on the scores of the measures specific to each component. Confidence levels for the component grades were measured on a three point scale.

Changes in grades for components from the 2018 to 2019 report cards are presented as improved, declined and unchanged.

GRADING SYSTEM

- A** Very good (0.85-1.00)
- B** Good (0.65-0.84)
- C** Satisfactory (0.50-0.64)
- D** Poor (0.25-0.49)
- E** Very poor (0.00-0.24)

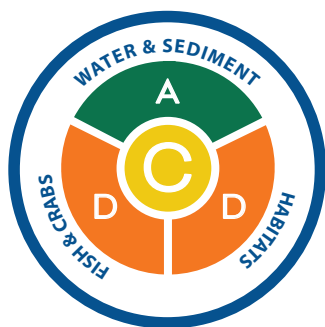
CONFIDENCE



CHANGE 2018 to 2019

improved declined unchanged

Environmental Results



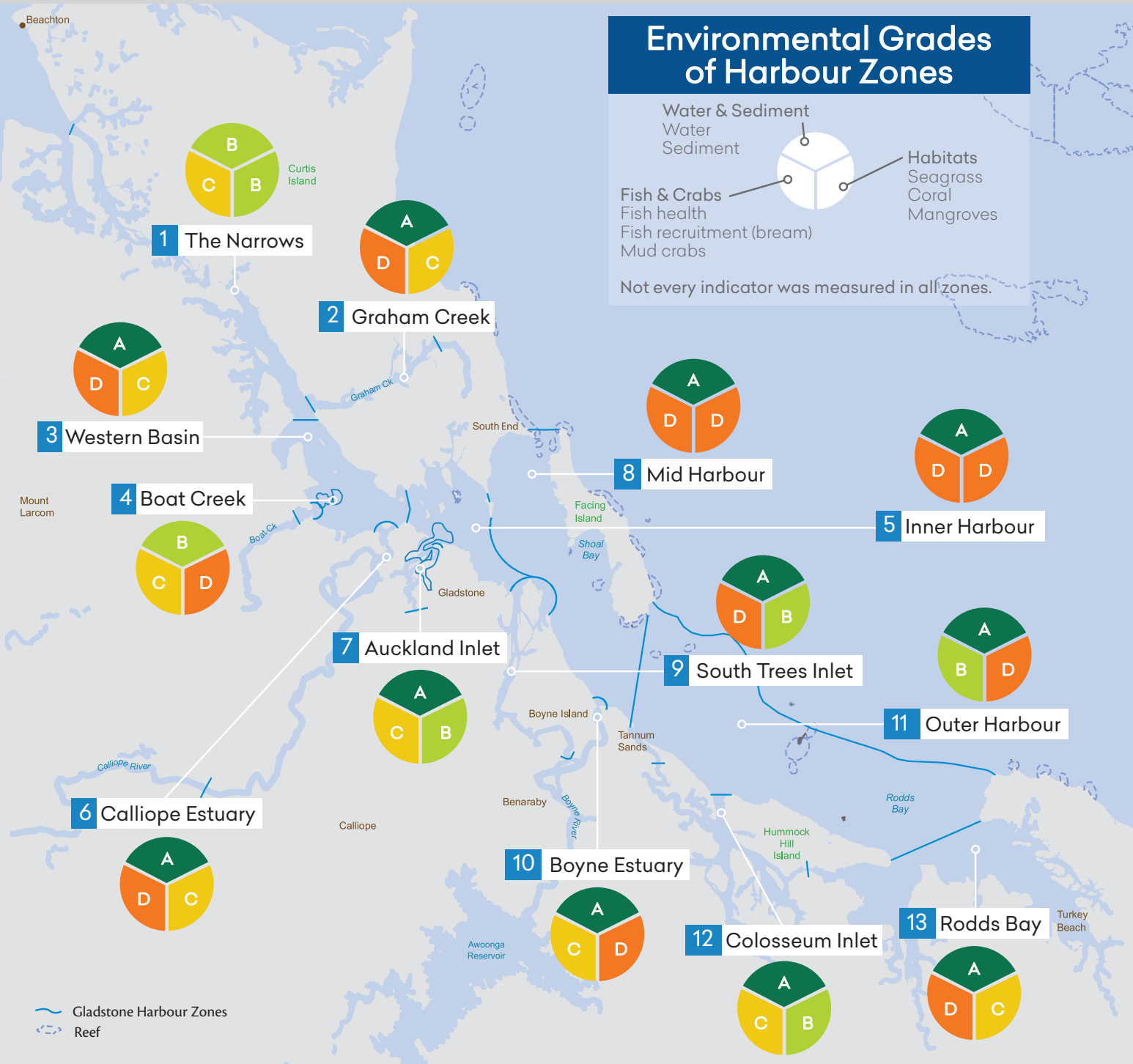
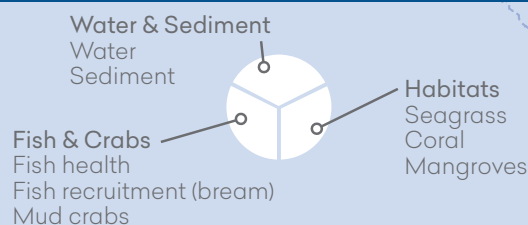
unchanged
2018 to 2019

high
confidence

ENVIRONMENTAL	SCORE	GRADE
OVERALL ENVIRONMENTAL	0.60	C
Water & Sediment	0.88	A
- Water	0.81	B
- Sediment	0.95	A
Habitats	0.45	D
- Seagrass	0.59	C
- Coral	0.18	E
- Mangroves	0.57	C
Fish & Crabs	0.48	D
- Fish health	0.69	B
- Fish recruitment (breem)	0.27	D
- Mud crabs	0.47	D

The overall Environmental score was satisfactory (C). Water and sediment quality remained very good. The overall score for habitats improved slightly from 2018 owing to an improvement in seagrass which went from a D to a C. The scores for mangroves and coral were similar to the previous year. Fish and crabs received a D as a result of poor scores for fish recruitment and mud crabs. However, fish health included for the first time this year received a B. The inclusion of fish health completes the environmental component.

Environmental Grades of Harbour Zones



Research Highlights

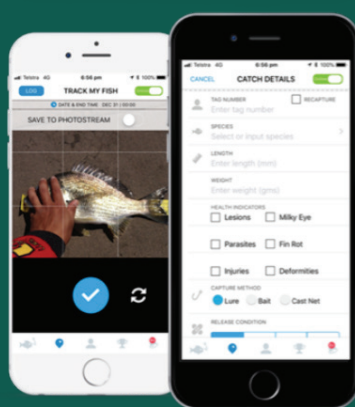


MUD CRABS have been captured (and released) from an unfished Central Queensland population to confirm the benchmark used for Sex Ratio. Results help assess the extent to which crab populations are impacted by fishing and other pressures.

FISH HEALTH has been included in the report card for the first time. Health is assessed by visual assessment as well as examination of the internal and external organs of dissected fish from a monitoring program.

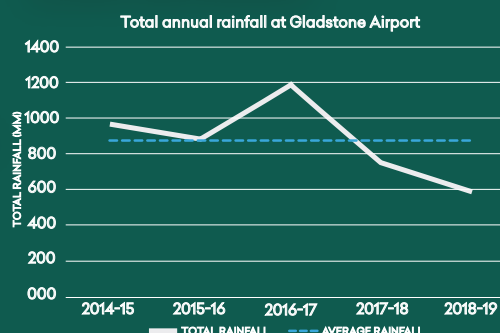
A **CITIZEN SCIENCE** approach has been used to include data for one fish health program. Data was provided by anglers from images and measurements collected at the Boyne Tannum HookUp and by the Gladstone Sports Fishing Club.

A rare **MANGROVE LEAF OYSTER** (*Isognomon ephippium*) Reef was discovered in Rodds Bay during mangrove field surveys in May 2019. These reefs were extensively harvested for the shell in years gone by.



EAGLE RAYS (*Aetomylaeus* spp.) were observed schooling in large numbers in Rodds Bay during mangrove field surveys in May 2019. These animals gather at times, possibly for mating.

GLADSTONE RAINFALL



Large rainfall events and extended dry seasons can impact the health of the harbour. In the 2018-19 reporting year, annual rainfall at Gladstone Airport was below the 25 year average and the lowest recorded since the first full report card in 2015.

Acknowledgement of Country

The Gladstone Healthy Harbour Partnership acknowledges the Traditional Owners of the land and sea in the Port Curtis Coral Coast region, the Gurang, Gooreng Gooreng, Taribelang Bunda and Bailai people, and pays respect to the ancestors, the Elders both past and present, and to the people.



OUT NOW

Read how Barry & Jenny view the 2019 results of the harbour.

The Gladstone Healthy Harbour Partnership (consisting of the following partners) independently monitors and reports on the health of Gladstone Harbour, and in doing so provides this annual Report Card.



For more information, resources and fact sheets please contact:



Gladstone Healthy Harbour Partnership

PO Box 3465 Tannum Sands Queensland 4680

info@ghhp.org.au | www.ghhp.org.au | 1800 241 254



This publication may be used for research, individual study and educational purposes. Properly acknowledged quotations may be used, but queries regarding republication of any material must be addressed to GHHP.

Photo credits: GHHP, Aerial Media Gladstone, JCU/TropWATER and CQU.

Completion: December 2019